

**Bowen
Campus
Wellington**
OPENING 2019



Artists Impression Only



Creating space for a thriving capital

RETAIL SERVICES & HOSPITALITY LEASING GUIDE

Over 600m²
of modern
retail, food
& beverage



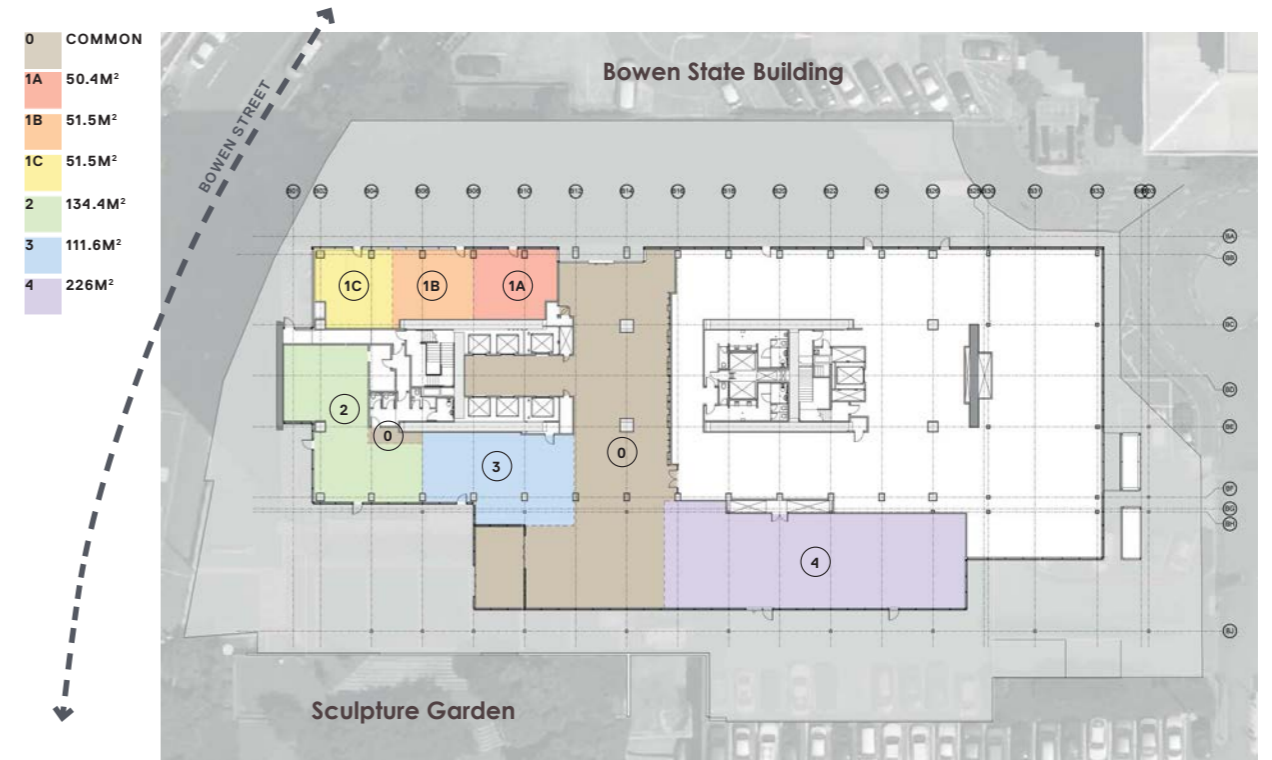
Artists Impression Only

The redevelopment of Bowen Campus will reinvigorate Wellington's parliamentary precinct. Situated directly behind parliament, Bowen Campus sits on one hectare of land and when completed will accommodate around 5,000 workers. Opening in late 2019, stage one of the Bowen Campus redevelopment consists of Charles Fergusson Tower and Bowen State Building. Over 600m² of modern retail, food and beverage tenancies on the ground floor of Bowen State Building will service the needs of both the workers within Bowen Campus and the surrounding neighbourhood.

OPPORTUNITIES

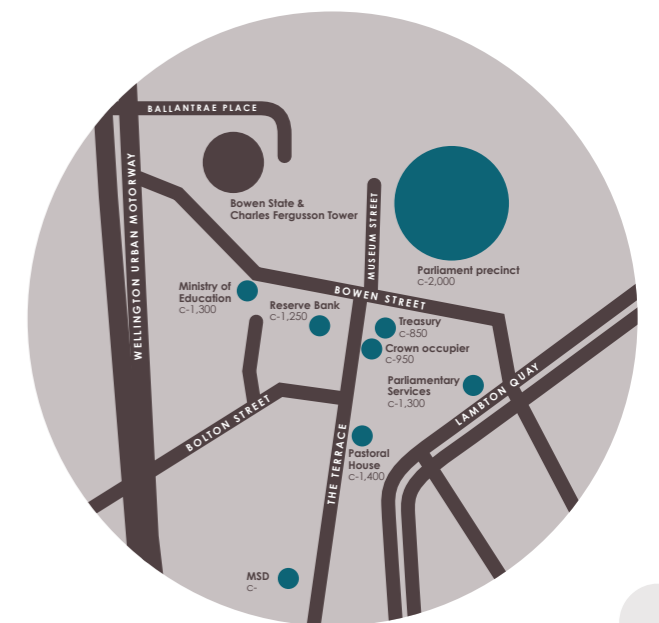
From grab and go and incredible coffee to an all-day bistro we are on the hunt for creative food and beverage concepts new to the Wellington market as well as convenience and services to meet the needs of workers. Bowen Campus will accommodate a number of government occupiers

with long-term leases, providing operators with certainty of customers. Tenancies vary in size, with many having an outlook on to the Beehive and sculpture gardens adjacent to Bowen State Building. The redeveloped campus is designed to 100% of National Building Standards (NBS).



LOCATION

At the heart of the government precinct, the neighbouring office buildings adjacent to the campus largely house government employees. Bowen State Building and Charles Fergusson are the first stage of the Bowen Campus development with two additional buildings planned on the adjacent sites at 40 and 44 Bowen Street. The new buildings, with a targeted completion (pending leasing) of late 2021 will complete Bowen Campus and bring the number of occupants across the four buildings to 5,000.



*Stylised map and guide only

HISTORY SET AT THE HEART OF PARLIAMENT

Bowen Campus has a rich history that can be drawn from to create unique hospitality and retail concepts. The renewal of the campus will celebrate the history while truly modernising the buildings. During the 1950s and 1960s the architectural division of the Ministry of Works designed a number of modernist government buildings. This included Bowen State Building which opened in 1962, named after Sir George Bowen, Governor of New Zealand from 1867 – 1873. Charles Fergusson Building opened in 1975, named after Sir Charles Fergusson Governor General of New Zealand from 1924 – 1930.



ABOUT US

The Bowen Campus redevelopment is being led by Precinct Properties. We are the largest owner of premium inner-city business space in Wellington and Auckland. Our ethos is to create 'space to thrive' and we know what success looks like.



As owner, developer and manager of this iconic project our focus is providing quality space and service. We understand success in the retail realm requires a collaborative approach.

TIMING

Retail is scheduled to open late 2019. Sound like the right fit for you? Contact our team to learn more.



CONTACT

RICHARD TRIEU
PROPERTY MANAGER

P: +64 22 191 2960

E: Richard.Trieu@precinct.co.nz

For more information visit www.precinct.co.nz


creating spaces to thrive